

# Survival Kit

Humanities and Social Sciences Campus

Select your destination below

[SKKU\(Seoul\)](#)

[I-House](#)

[K-House](#)

[E-House](#)



SUNG KYUN KWAN  
UNIVERSITY(SKKU)

# Survival Kit

*From Incheon Airport to SKKU*  
(Destination: Humanities and Social Sciences Campus)



SUNG KYUN KWAN  
UNIVERSITY (SKKU)

# At Incheon International Airport

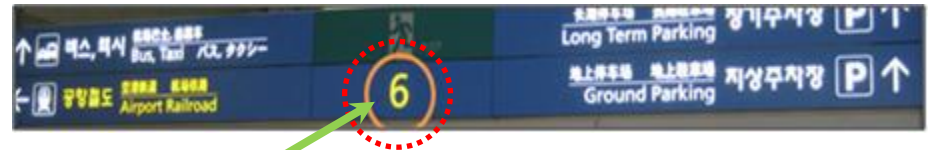
There are three ways (airport limousine, subway, and taxi) to get to the Humanities and Social Sciences Campus from Incheon International Airport. Considering travel time and cost, we highly recommend that you take the **airport limousine**; the subway is cheap and good, but rather complicated, while a taxi is too expensive.



Airport limousine  
6011

# 1. Upon Arrival

After getting your luggage from the carousel in the baggage claim area on the 1<sup>st</sup> floor of the airport, proceed to **Gate 6** to get to the limousine bus stops, which are on the same floor.



Gate 6

Go to limousine bus stop **5B** and take airport limousine **6011**, which runs every 20 to 30 minutes. It is recommended to exit through Gate 6 as it is the nearest one to limousine bus stop 5B.



6011

\* **Note:** From Incheon International Airport, the first limousine starts at 05:40 and the last one is at 22:40.

## 2. Purchasing a Ticket

Before getting on a bus, purchase a ticket in cash at the ticket box or pay the driver in cash. It costs 10,000 KRW for a one-way trip from the airport to the destination.



### 3. Limousine Stops

It will take around 90 minutes to get to the bus stop “**Sungkyunkwan University**” for the *Humanities and Social Sciences Campus*; it can take a little bit more or less time depending on the traffic. All stops are announced in English.



- 
- |    |                                      |
|----|--------------------------------------|
| 1  | <b>Incheon International Airport</b> |
| 2  | Mapo-Gu Office, Subway Stop          |
| 3  | Seongsan Hall                        |
| 4  | Yonsei University                    |
| 5  | Ewha Woman's Univ. Back (rear) Gate  |
| 6  | Gyeongbokgung (Subway Line3)         |
| 7  | Anguk Station (Subway Line 3)        |
| 8  | Changdeokgung                        |
| 9  | Changgyeonggung                      |
| 10 | <b>Sungkyunkwan University</b>       |
| 11 | Hansung University                   |
| 12 | Sungshin Woman's University          |
-

## 4. Ready to Get Off

When your bus gets near the “**Sungkyunkwan University**” bus stop, push the red button attached on the wall to signal to the driver that you are ready to get off.



I want to get to...

SKKU(Seoul)

I-House

K-House



## 5. Get to the campus

When you get off at the Sungkyunkwan University bus stop, you will notice an intersection with three-story KT Olleh building on the other side of the street. At this intersection, cross the road and get into the road between **Olleh** and **Daiso**.

KT Olleh

Daiso



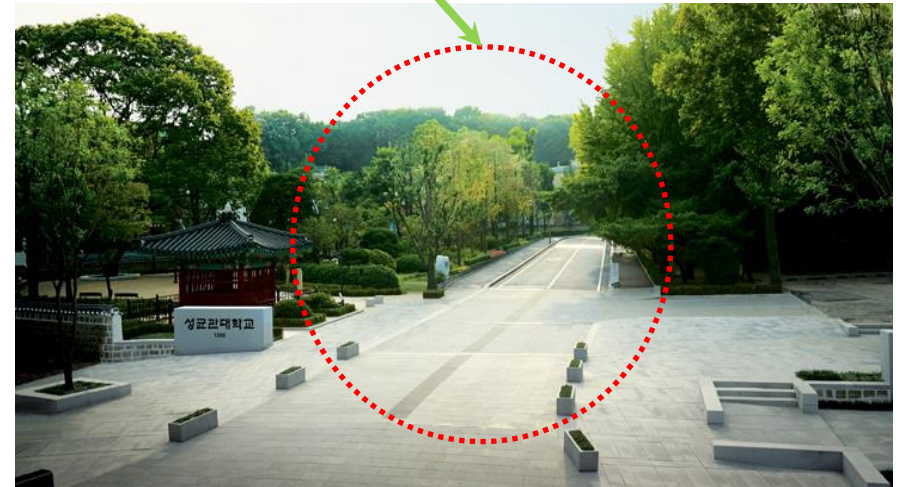
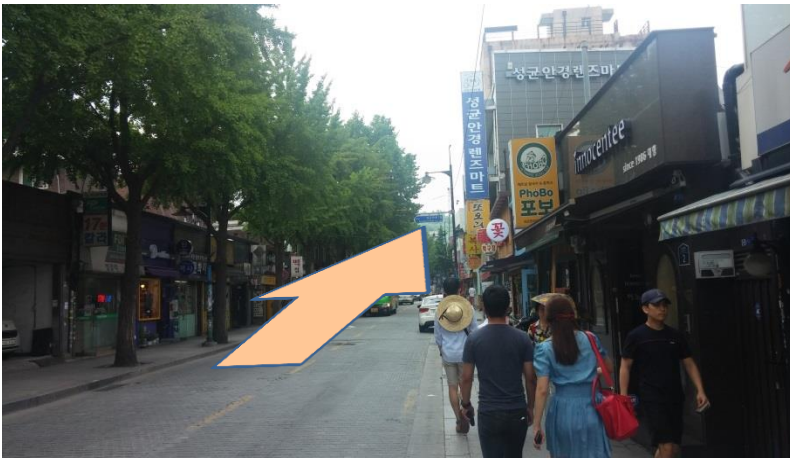


[Return to the first page](#)

## 6. Find the Main Gate

1. Walk straight up the road to the entrance of SKKU. (around 250 m, 5-10 minutes on foot)
2. You will clearly see the entrance of SKKU on your left.

Main Gate



# Survival Kit

From Incheon Airport to Dormitory  
(Destination: I-House)

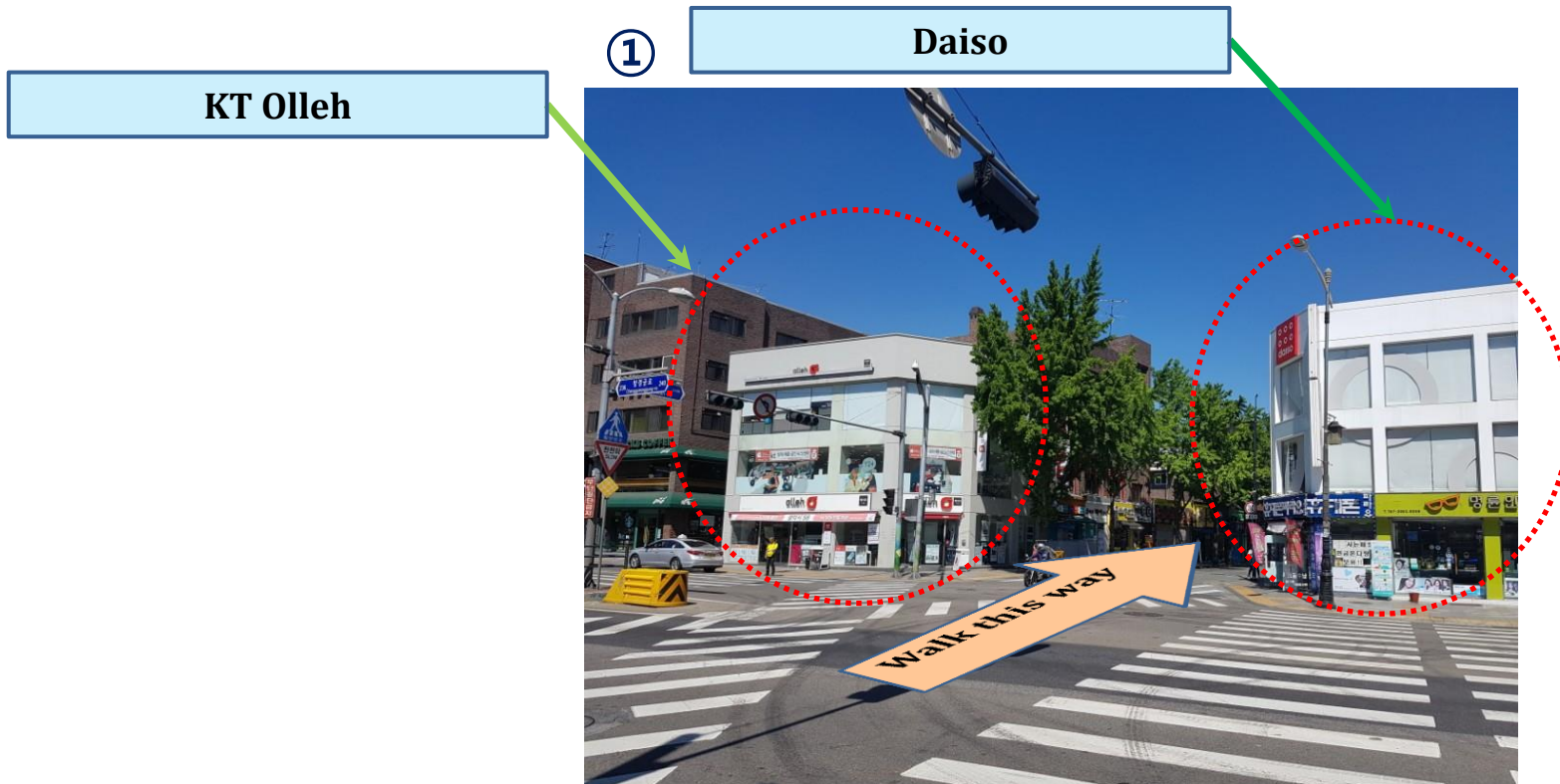


SUNG KYUN KWAN  
UNIVERSITY (SKKU)

# I-House

\*You can refer to the guide “From Incheon Airport to SKKU” in advance.

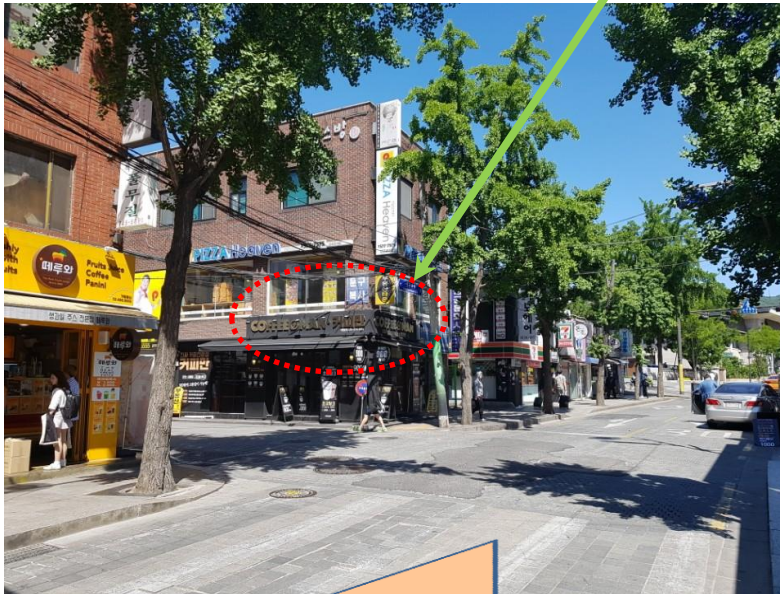
1. When you get off at the “**Sungkyunkwan University**” bus stop, you will notice an intersection with a three-story KT Olleh building on the other side of the street. At this intersection, cross the road and get into the road between **Olleh** and **Daiso**.



# I-House

2. Walk straight down until you see Coffee Man.

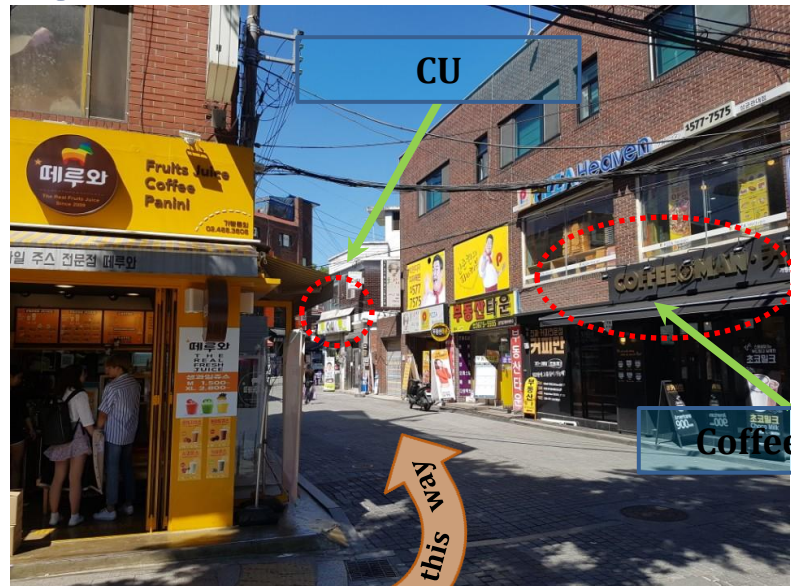
②



Coffee Man

3. At Coffee Man, you will turn left and walk to a small three-way intersection featuring a convenience store, CU.

③



CU

Coffee Man



[Return to the first page](#)

# I-House

4. From the intersection with CU, turn right and walk straight for five-minutes. You will get to the dormitory building with the logo of SKKU, I-House.

⑦



④



⑤



⑥



# Survival Kit

From Incheon Airport to SKKU  
(Destination: K-House)



SUNG KYUN KWAN  
UNIVERSITY (SKKU)

# K-House

\*You can refer to the guide “From Incheon Airport to SKKU” in advance.

1. When you get off at the “**Sungkyunkwan University**” bus stop, you will notice an intersection with a three-story KT Olleh building on the other side of the street. At this intersection, cross the road and get into the road between **Olleh** and **Daiso**.

KT Olleh

Daiso





# K-House

2. Cross the street and walk straight down to the entrance of SKKU. (around 250 m, 5-10 minutes on foot)
3. You will clearly see the entrance of SKKU on your left.



# K-House

4. From the entrance, walk straight up the road 5-10 minutes (around 350 m). When you see 600<sup>th</sup> Anniversary Hall, turn right. You will get to International Hall.



600<sup>th</sup> Anniversary Hall





# K-House

5. From International Hall, walk to the left side of the building.
6. When you see the stairs, go up the stairs. Walk down the stone path.



[Return to the first page](#)

# K-House

7. Turn right at the end of the stone path, and you will see K-House (Kingo House).

Address: 7-35, Sungkyunkwan-ro, Jongno-gu, Seoul, Korea

\*old version of the same address: Myungryun 3ga 51, Jongno-gu, Seoul, Korea



# Survival Kit

From Incheon Airport to SKKU  
(Destination: E-House)



SUNG KYUN KWAN  
UNIVERSITY (SKKU)

# E-House

\*You can refer to the guide “From Incheon Airport to SKKU” in advance.

1. Get off at the bus stop called “**Changgyeonggung, Mayplace Hotel**” and walk straight until you see Blue sign of SNUH.



2. When you see the sign, cross the road.



# E-House

3. After you cross the road, stand in the street and call a taxi there. A taxi to the dorm costs about 3,000 KRW.

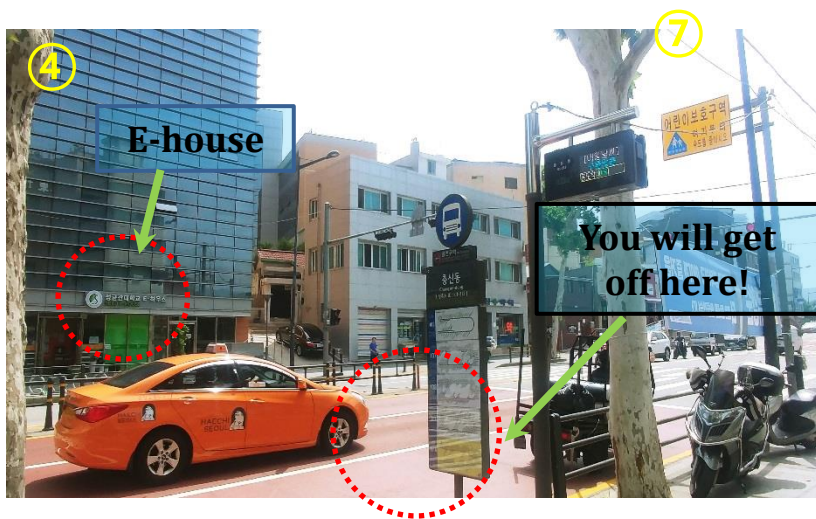
Address: 257 Yulgok-ro, Jongno-gu, Seoul, Republic of Korea





# E-House

4. You will get out of the taxi across from E-house. Cross the road, then you will get to the dormitory building with the logo of SKKU, E-House.



[Return to the first page](#)

# E-House

**The shuttle bus** will run from 8 AM to 9 AM every weekday.

The shuttle bus stop is in front of the “7-Eleven” convenience store near E-house.

※ If you miss the shuttle bus, you can also take a **bus 301** at the same bus stop. Get off at the “**Myungryun 3-ga, SKKU entrance**” bus stop and walk to SKKU.

